



# SPACIOUS 3 BEDROOM HOMES

Move In Ready!

Brand New Homes! 3 bedrooms, 1.5 bathrooms, 1 Allocated Carpark on a Free Hold Title!

Presenting a golden opportunity to own a finished, modern, turnkey townhouse in Te Atatu Peninsula. These are brand new, 3 bedroom, 1.5 bathroom townhouse with 1 carpark. These finished, move in ready home is perfect for first home buyers, young families, and investors.

Located in the trendy and popular Te Atatu Peninsula , these freehold home oozes quality, sophistication and convenience. With easy motorway access and only 15 minutes to the CBD this homes are perfectly located.

Step into the spacious and high quality kitchen fitted with Bosch appliances that flows into the family dining area and lounge, creating a fantastic feeling ground level. Enjoy a private sun filled back yard that is fully fenced and landscaped.

Upstairs you will find three large sun filled bedrooms, and a highly spec'd family bathroom as well as ample storage with multiple cupboards and wardrobes. Soft, neutral colours offer the perfect canvas to add your personal touch and style.







# Key Features

- 3 bedrooms
- 1.5 bathrooms
- 1 carpark
- Fully fenced landscaped outdoor living areas
- Freehold title
- Bosch appliances
- Healthy Homes Compliant
- Heat pump and double glazing
- 3 large bedrooms and an extra storage cupboard
- Plenty of natural light





# Location

Located in the highly desirable Te Atatu Peninsula area, these freehold home ooze's quality and sophistication.

Enjoy the ease of access to Te Atatu Peninsula shops, and bus stops. With public transport links close by, you have easy access to Motorways and Auckland CBD.

Te Atatu Peninsula is a fast-appreciating suburb, making it a wise investment choice.

## Shopping

Te Atatu shops, St Lukes mall

## Transport

Bus stops at the end of the road, arterial transportation routes and quick motorway access.

## Recreation

Taikata Sailing Club, Kelvin Strand Beach, Avondale Sunday market



**Matipo Primary School**

**25 Abbotleigh Avenue**



# Interior Highlights

- Spacious open plan downstairs kitchen, dining and living area
- Full set of Bosch appliances
- Living room opens out onto a private back yard
- 3 large bedrooms and an extra storage cupboard
- 1.5 large bathrooms, 1 full bathroom upstairs and 1 toilet downstairs
- Fully tiled showers and kitchens
- Plenty of natural light
- Heat pumps in all units



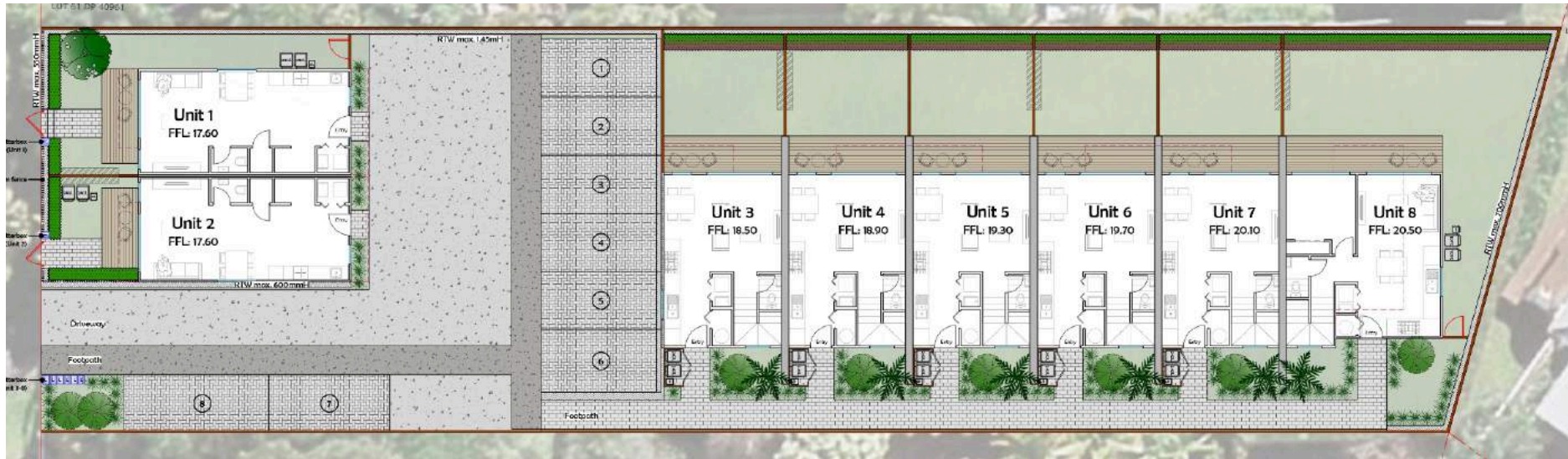
# Exterior Highlights

- Landscaped back yard which is an all-day sun trap
- Plenty of glazing on all levels
- Fully healthy homes compliant
- Acoustic intertenancy wall
- Free hold title and allocated carpark
- Solid construction with concrete slab foundations, double glazed windows and robust cladding
- Renowned developer and builder with an extensive track record all over Auckland





# Landscape Plan



## Townhouse's

Number of Bedrooms 3

Approx. Floor Area 83m<sup>2</sup>

Number of Bathrooms 1.5

Approx. Lot Size 83m<sup>2</sup>

Carparking 1















# How to buy with Whitestone Group

**1**

## Step 1

Get in touch with the Whitestone Group team, and we will work with you to identify suitable property options for your situation and requirements.

**2**

## Step 2

Once we have identified your favourite property, we will help you fill out an offer for us to present to the vendor.

**3**

## Step 3

If your offer is accepted, we will convey this to you and your due diligence period will begin, this is the time period where we help you conduct due diligence regarding the property and your finance to make sure you are happy to proceed.

**4**

## Step 4

Once the contract goes unconditional and you have paid the deposit, you have purchased the home! This is cause for celebration as the purchase is complete!

# About



Whitestone Group is a licensed real estate agency specialising in the sale of townhouses, both existing and off the plans. We pride ourselves on exceptional service, delivering the best possible outcomes for our clients.

Whether you're a first home buyer or an investor, we specialise in helping our customers into the perfect home, and structuring the ideal purchase, no matter how complex your personal situation. With years of experience selling for some of New Zealand's most reputable developers, we bring a wealth of knowledge and expertise to every transaction.

Using our team of the best property professionals, including mortgage brokers, lawyers, accountants, property managers, and Kainga Ora partners, we go above and beyond to help our clients achieve their property goals.

As a trusted advisor, we are committed to building long-term relationships and helping our clients achieve their property goals. With Whitestone Group, you can expect an unparalleled level of service and support throughout your property journey.



**Shaneel Singh**  
Director  
Licensed REAA 2008

[shaneel@whitestonegroup.co.nz](mailto:shaneel@whitestonegroup.co.nz)  
02041352128



**Finn Cable**  
Director  
Licensed REAA 2008

[finn@whitestonegroup.co.nz](mailto:finn@whitestonegroup.co.nz)  
0221234223

Important: Whitestone Group Limited ("Whitestone") has compiled the information in this information pack (the "Pack") as a general guide. While we have taken reasonable care to ensure the accuracy of the information as of the date of publication, we make no representation or warranty of its accuracy, completeness, or currency. Prospective buyers, tenants, or other interested parties should not solely rely on this information for making purchasing decisions. Instead, they should conduct their own research, consult with legal, financial, and real estate professionals, and base their decisions on that independent information. Whitestone shall not be liable for any direct, indirect, incidental, consequential, or special damages or losses, whether tangible or intangible, resulting from the use of or reliance on the information in this Pack. This Pack does not create any contractual or other legal obligations between Whitestone and the recipient and does not constitute professional advice. Whitestone reserves the right to amend or supplement the information in this Pack without notice. By accepting this Pack, the recipient acknowledges and agrees to these terms. For further inquiries, please contact Whitestone Group Limited at [enquiries@whitestonegroup.co.nz](mailto:enquiries@whitestonegroup.co.nz).