

A modern two-story house with a mix of wood and dark grey cladding. The house features large windows and a flat roof. The front facade is composed of dark grey vertical slats and wood panels. The ground floor has a light grey brick base. A dark grey fence with horizontal slats runs along the front of the property. The sky is blue with some clouds.

69 Roberta Ave

Glendowie



2-3 Bedrooms



1.5 - 2 Bathrooms



1 Carpark



69 Roberta Ave

Glendowie



2 -3 bedrooms



1.5 - 2 bathrooms



1 carpark

What

Welcome to 69 Roberta Avenue, Glendowie! Experience elegant modern living and exceptional amenities in one of Auckland's most prized suburbs. This development consists of only 15 architecturally designed homes, each with 2-3 spacious bedrooms, 1.5-2 bathrooms, 1 allocated carpark and study options! These homes open the door to an executive lifestyle in one of Auckland's most coveted neighbourhoods.

Where

These homes are perfectly located only 2 minutes from Glendowie Bay and 5 minutes to St Heliers Bay Beach and Shops. You are also only 17 minutes from the CBD! With bus stops nearby on Riddell and West Tamaki Road, public transport is close at hand. These homes are zoned for Glendowie Primary and Glendowie College, both Decile 10 schools!

Who

These homes are being sold exclusively through Whitestone Group. This development was crafted and designed meticulously by Maidstone Group, and constructed by the renowned Auckland construction company Madewell Construction.

69 Roberta Ave

Glendowie

Lot No	Bed	Bath	Parking	Floor Sqm	Lot Sqm	Asking Price
1	2	1.5	1	77	141	\$929,000
2	2	1.5	1	77	75	\$899,000
3	3	2	1	93	75	\$999,000
5	3	2	1	93	76	\$999,000
13	2	1.5	1	77	102	\$929,000
15	3 + Study	2	1	105	126	\$1,099,000

Land Description

Freehold

Completion Date

Completed

Residence Association

\$1580 p.a

Building Guarantee

10 Year Stamford Building
Warranty

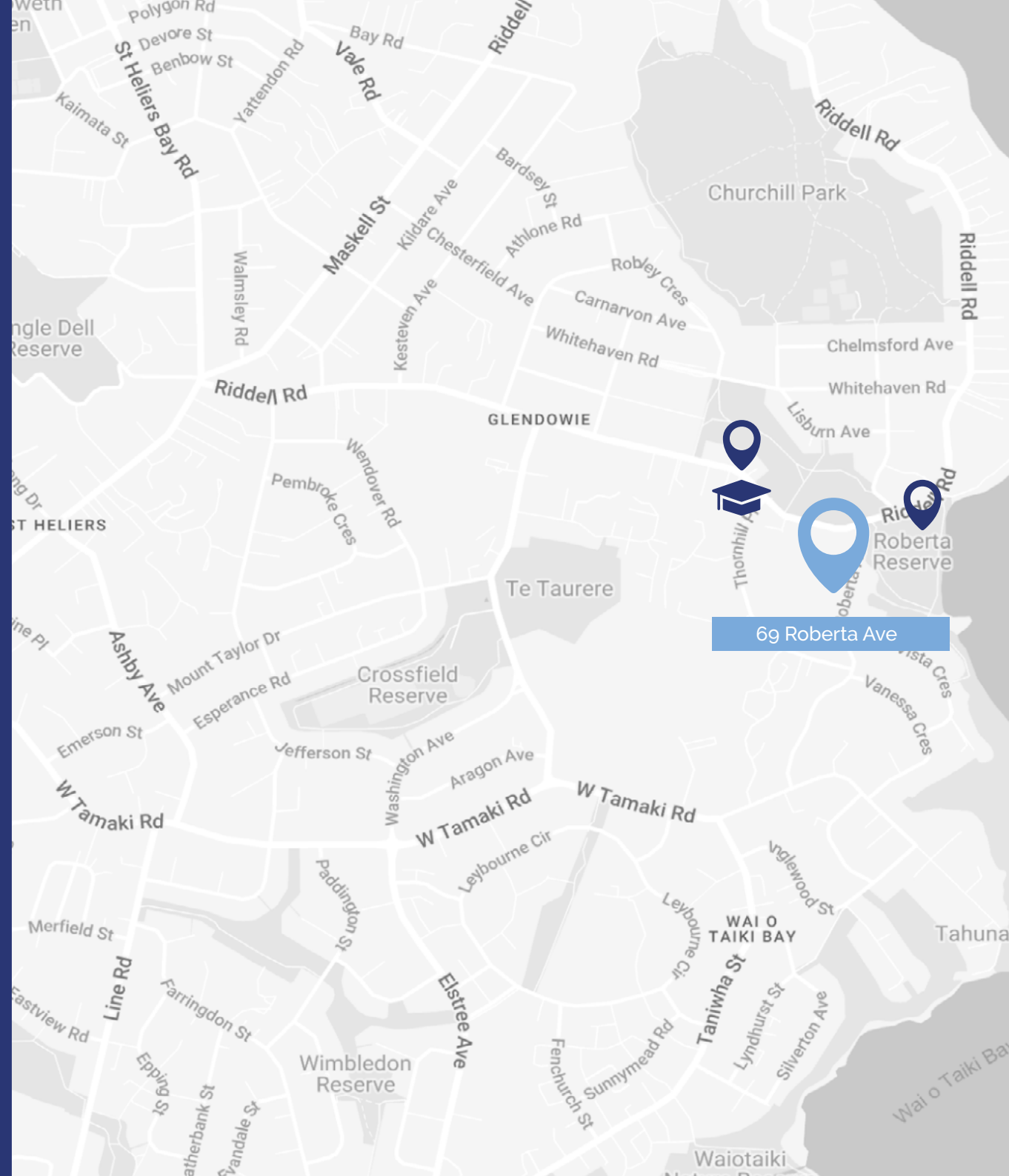


Key Features

- 2-3 bedrooms
- 1.5-2 bathrooms
- Selected 3 bedroom homes have studies
- 1 Carpark
- Priced from \$899K
- Rental appraisals of \$780-830 P/W for 2 bedroom homes
- Rental appraisals of \$900-950 P/W for 3 bedroom home
- 10 year Stamford building warranty and 1 year minor defects period
- Freehold titles

Location

- 📍 Zoned for Glendowie school and Glendowie college
- 📍 Walking distance to Roberta reserve
- 📍 5 minutes to St Heliers bay beach and shops
- 📍 Only 17 minutes to Auckland CBD
- 📍 Bus stops nearby on Riddell and West Tamaki Road





Interior Highlights

- Fisher & Paykel appliances
- Healthy homes compliant
- Heat pumps and double glazing
- Master ensuite options
- 2-3 bedrooms
- 1.5-2 bathrooms
- Selected 3 bedroom homes have studies
- High quality finishes with tiled kitchens and bathrooms
- Return kitchens with bar stool seating

Exterior Highlights

- Freehold titles
- Large fully fenced and landscaped backyards
- Solid brick, pine and aluminium panel construction
- 10 year Stamford building warranty
- Zoned for Glendowie primary and Glendowie college
- Allocated car parks for each home
- Healthy homes compliant
- Heat pumps and double glazing



Landscape Plan



Lot 1

Townhouse 1

Approx floor area	77
Approx gross lot size	141
Number of bedrooms	2
Number of bathrooms	1.5
Carparking	1



First Floor



Ground Floor

Lot 2

Townhouse 2

Approx floor area	77
Approx gross lot size	75
Number of bedrooms	2
Number of bathrooms	1.5
Carparking	1



First Floor



Ground Floor

Lot 3 & 5

Townhouses 3 & 5

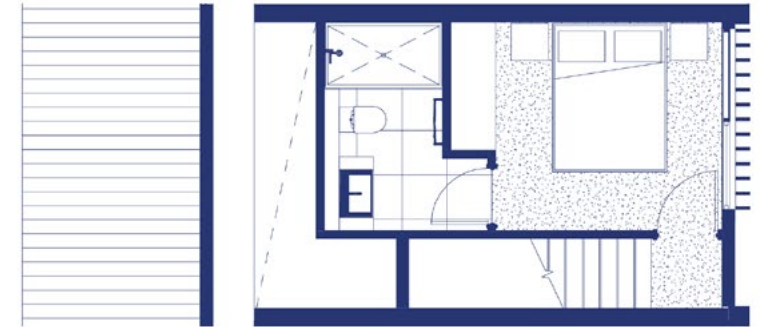
Approx floor area	93
-------------------	----

Approx gross lot size	75
-----------------------	----

Number of bedrooms	3
--------------------	---

Number of bathrooms	2
---------------------	---

Carparking	1
------------	---



Second Floor



First Floor

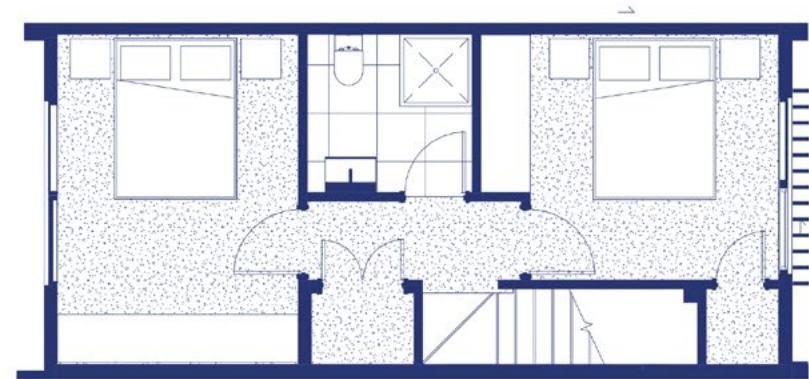


Ground Floor

Lot 13

Townhouse 13

Approx floor area	77
Approx gross lot size	102
Number of bedrooms	2
Number of bathrooms	1.5
Carparking	1



First Floor



Ground Floor

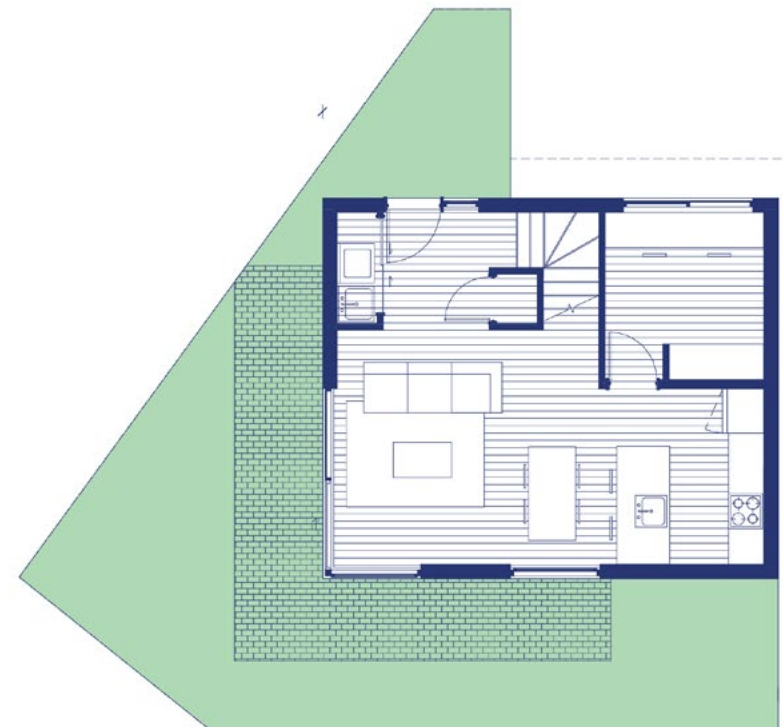
Lot 15

Townhouse 15

Approx floor area	105
Approx gross lot size	126
Number of bedrooms	3 + Study
Number of bathrooms	2
Carparking	1



First Floor



Ground Floor









How To Buy With Whitestone Group



Step 1.

Get in touch with the Whitestone Group team, and we will work with you to identify suitable property options for your situation and requirements.

Step 2.

Once we have identified your favourite property, we will help you fill out an offer for us to present to the vendor.

Step 3.

If your offer is accepted, we will convey this to you and your due diligence period will begin, this is the time period where we help you conduct due diligence regarding the property and your finance to make sure you are happy to proceed.

Step 4.

Once the contract goes unconditional and you have paid the deposit, you have purchased the home! This is cause for celebration as the purchase is complete!



Finn Cable

Director

Licensed REAA 2008

finn@whitestonegroup.co.nz

0221234223



Shaneel Singh

Director

Licensed REAA 2008

shaneel@whitestonegroup.co.nz

02041352128

About Whitestone Group

Whitestone Group is a licensed real estate agency specialising in the sale of townhouses, both existing and off the plans. We pride ourselves on exceptional service, delivering the best possible outcomes for our clients.

Whether you're a first home buyer or an investor, we specialise in helping our customers into the perfect home, and structuring the ideal purchase, no matter how complex your personal situation. With years of experience selling for some of New Zealand's most reputable developers, we bring a wealth of knowledge and expertise to every transaction.

Using our team of the best property professionals, including mortgage brokers, lawyers, accountants, and property managers. We go above and beyond to help our clients achieve their property goals.

As a trusted advisor, we are committed to building long-term relationships and helping our clients achieve their property goals. With Whitestone Group, you can expect an unparalleled level of service and support throughout your property journey.

Whitestone Group Limited Licensed REAA 2008

WS

WHITESTONE
— GROUP —